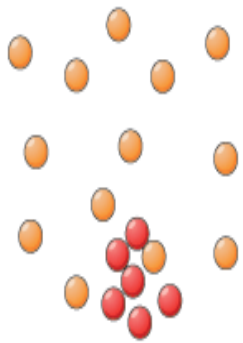
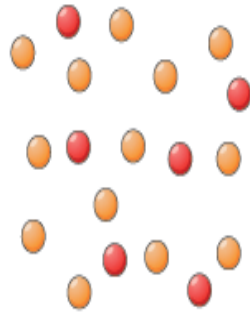


# TRYLEDIAD ??

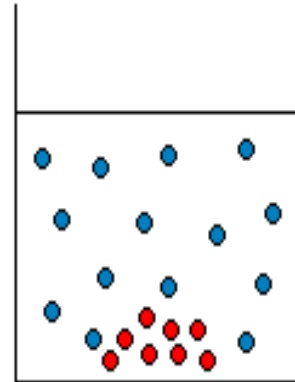


Before diffusion

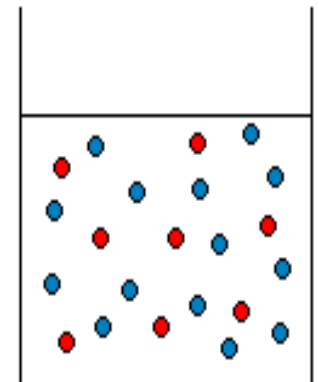


After diffusion

Before

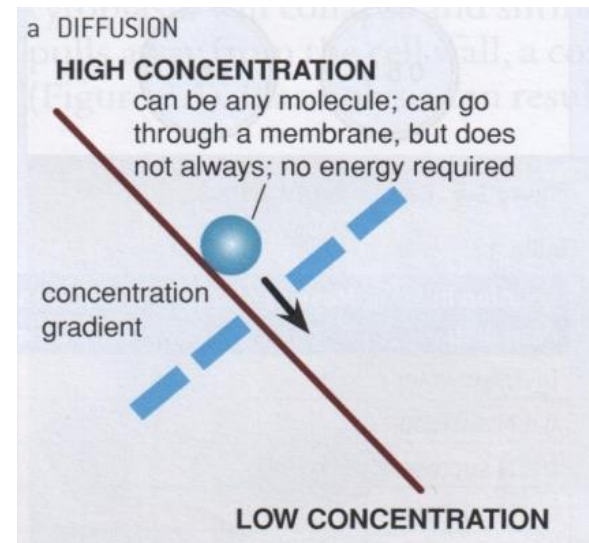
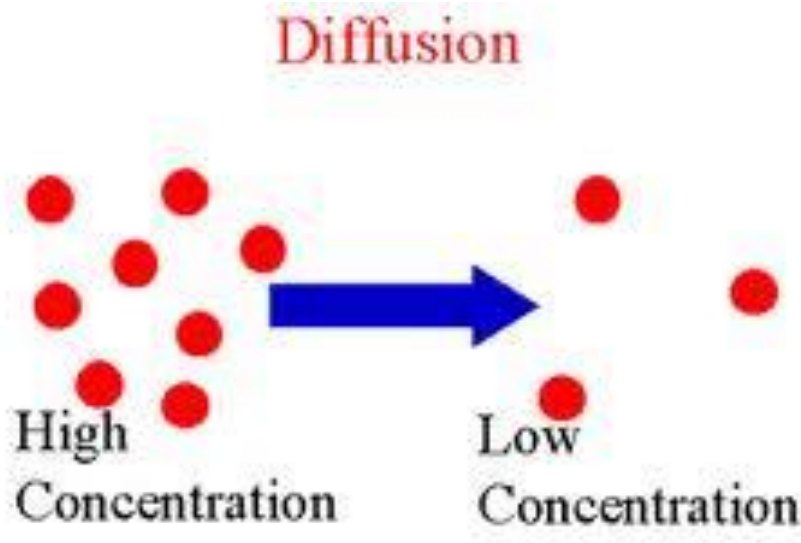


After

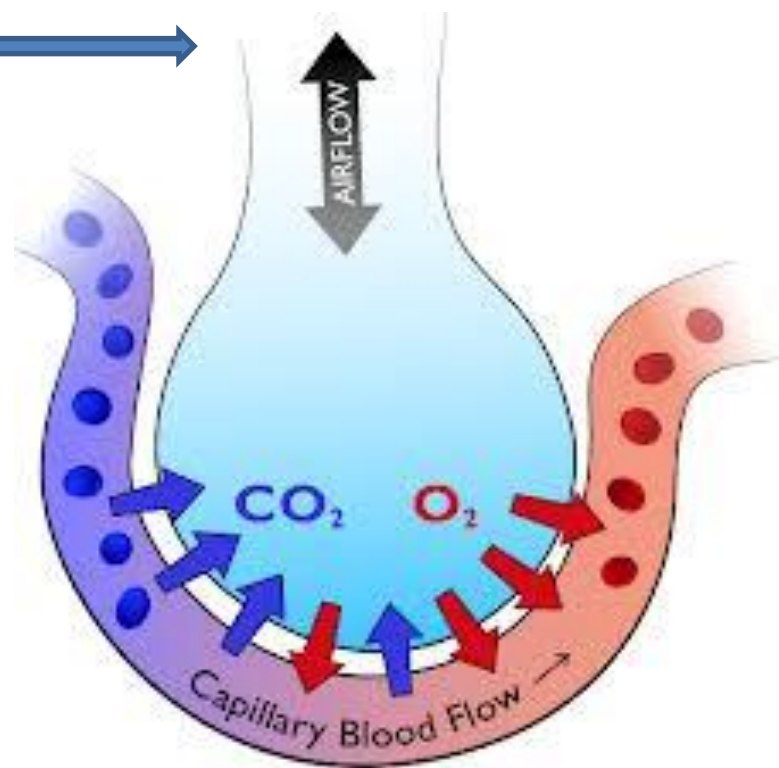
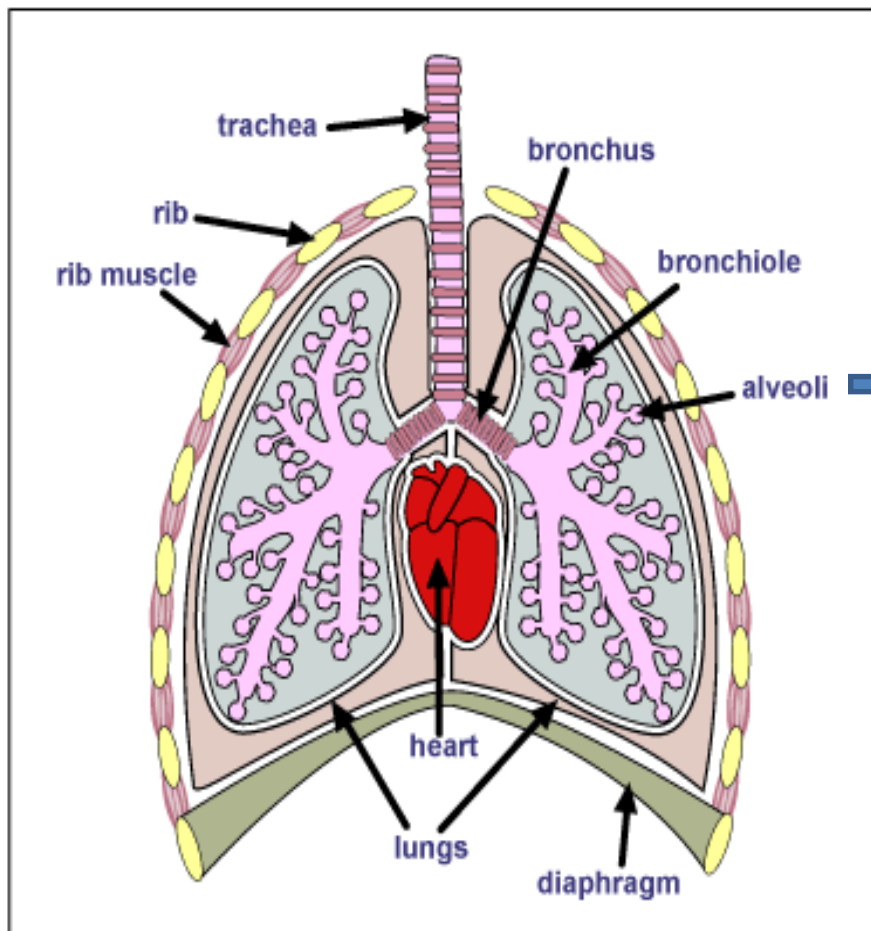


# DIFFUSION ??

**Symudiad molecylau o grynnodiad UCHEL i grynnodiad ISEL (lawr graddfa crynnodiad). DIM angen EGGNI !**



**Movement of molecules from a HIGH to a LOW concentration (down a concentration gradient). NO ENERGY needed !**



# OSMOSIS

**Trylediad molecylau dwr o  
grynodiad uchel i grynnodiad isel,  
lawr graddfa crynnodiad, drwy gell  
bilen lled athraidd.**

**The diffusion of water molecules  
from a high to a lower  
concentration, down  
a concentration gradient,  
through a selectively permeable**

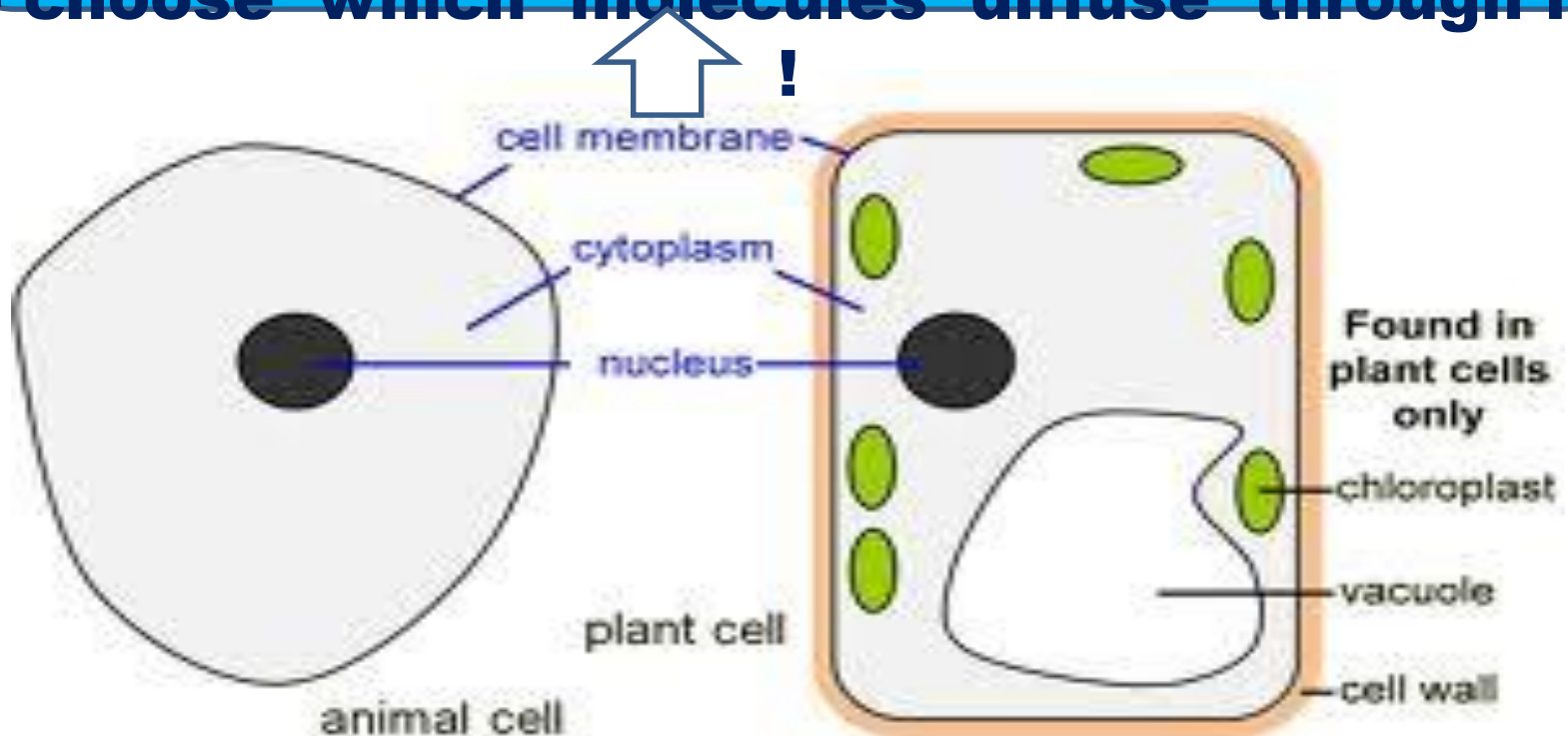
# LLED ATHRAIDD / ATHRAIDD

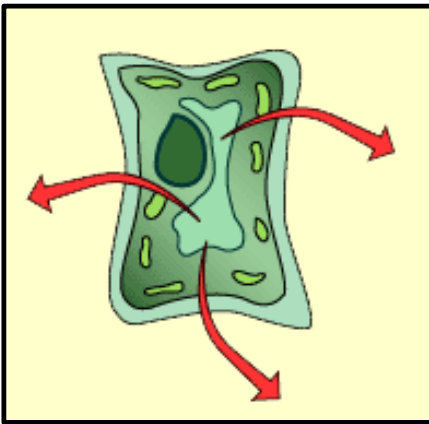
## DETHOLUS ?

- dewis pa folecylau sy'n tryledu drwyddi !

## SEMI PERMEABLE / SELECTIVELY PERMEABLE ?

- choose which molecules diffuse through it





# **HYDODDIANT HALEN / SALT SOLUTION**

**Colli Mas (Fflacsid) / LOSE Mass  
(Flaccid)**

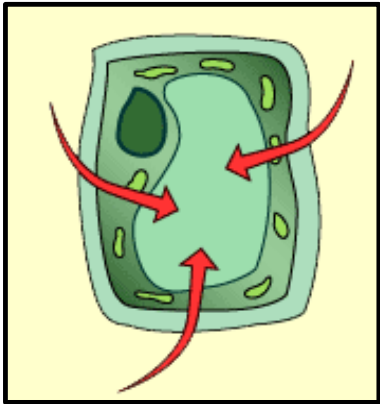
**Molecylau dwr yn tryledu allan o'r gell  
nodd drwy'r gell bilen  
lled athraidd.**

**Water molecules diffuse out of the  
cell sap through**

**the semi permeable cell membrane.**

**Crynodiad uwch o folecylau dwr yn y gell  
nodd !**

**Higher concentration of water molecules in  
the cell sap !**



# **DWR DISTYLL** **/ DISTILLED WATER**

**Ennill Mas (Chwydd-dyn) / Gain Mass**  
**(Turgid)**

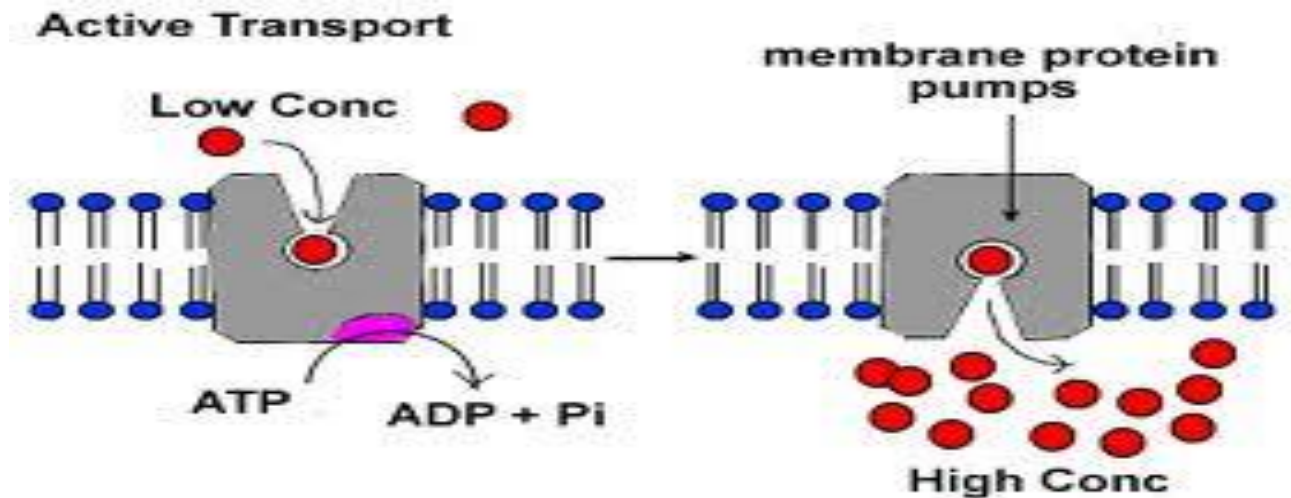
**Molecylau dwr yn tryledu i mewn i'r  
gell nodd drwy'r gell  
bilen lled athraidd.**

**Water molecules diffuse into the cell  
sap through the  
semi permeable cell membrane.**

**Crynodiad is o folecylau dwr yn y gell  
nodd !**

**Lower concentration of water molecules in  
the cell sap !**

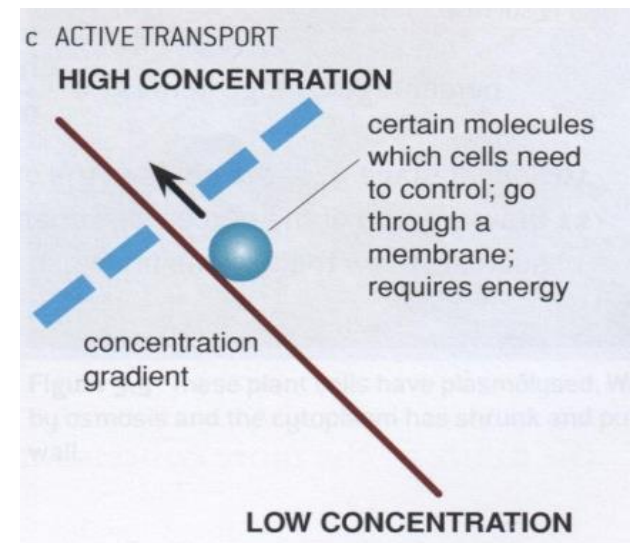
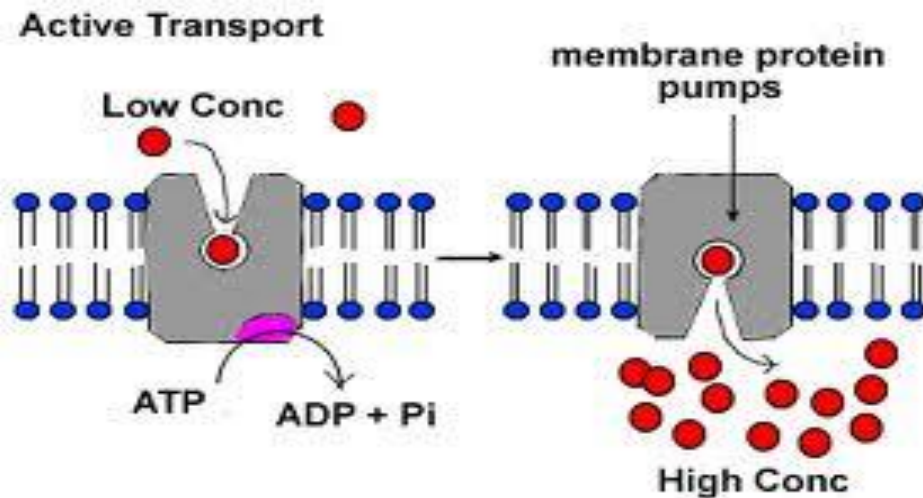
# CLUDIANT ACTIF ??



# ACTIVE TRANSPORT ?



**Symudiad molecylau o grynodiad ISEL i grynodiad UCHEL (yn erbyn graddfa crynodiad). RHAID cael EGNU !**



**Movement of molecules from a LOW to a HIGH concentration (against a concentration gradient). ENERGY IS needed !**

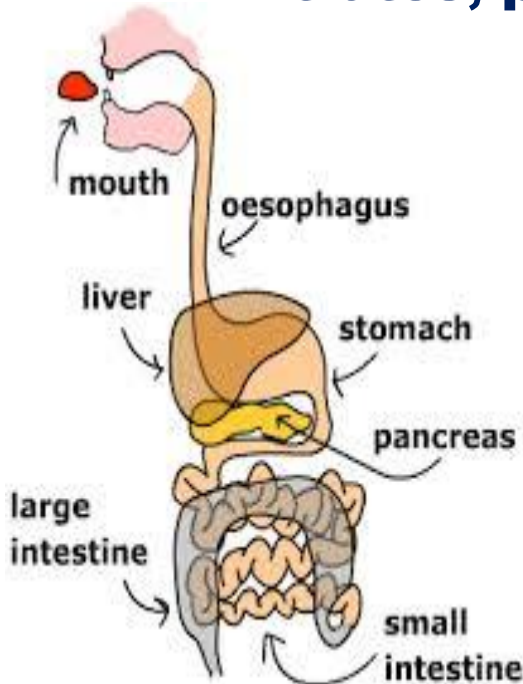
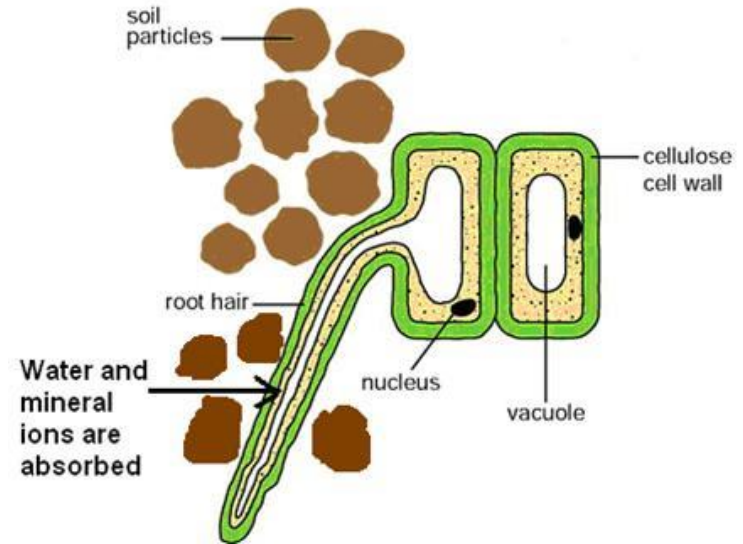
# GWREIDD FLEW ROOT

## HAIR

**Symudiad mineralau o'r pridd i'r gwagolyn e.e. nitradau, potasiwm**

**Movement of minerals from the soil into the vacuole e.g.**

**nitrate, potassium.**



## COLUDDYN BACH / SMALL INTESTINE

**Symudiad GLWCOS o'r coluddyn bach i'r gwaed (ar ôl y broses trylediad).**

**Movement of GLUCOSE from the small intestine into the blood (after diffusion has occurred).**